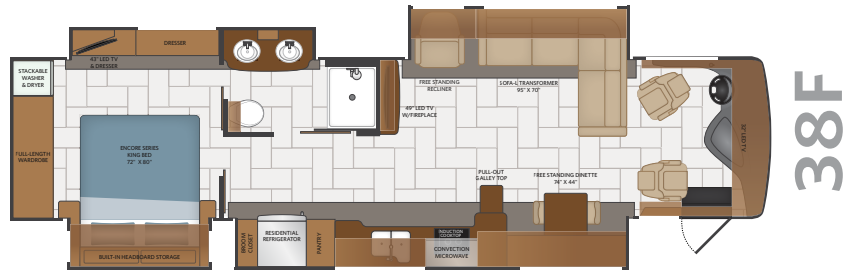


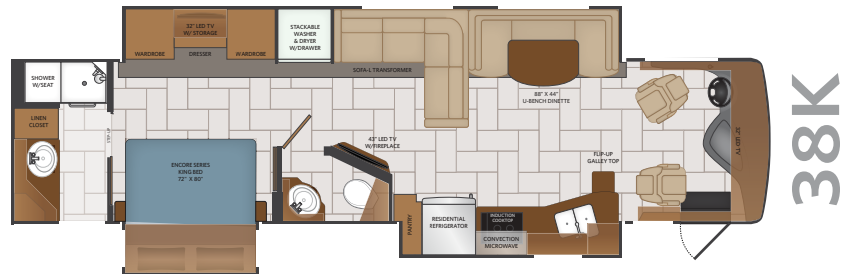
# DISCOVERY

2019 FLEETWOOD RV CLASS A DIESEL

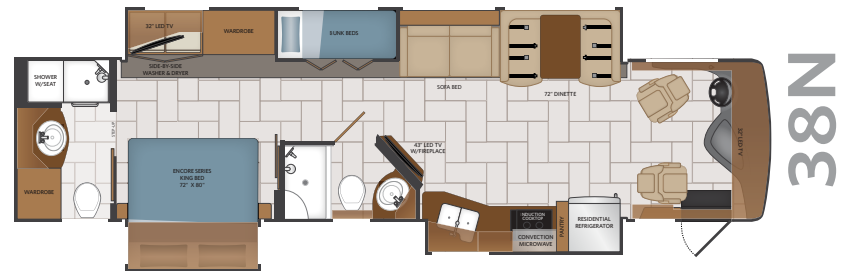
**38F** Options: 099, 107, 203, 217, 237, 436, 563, 830



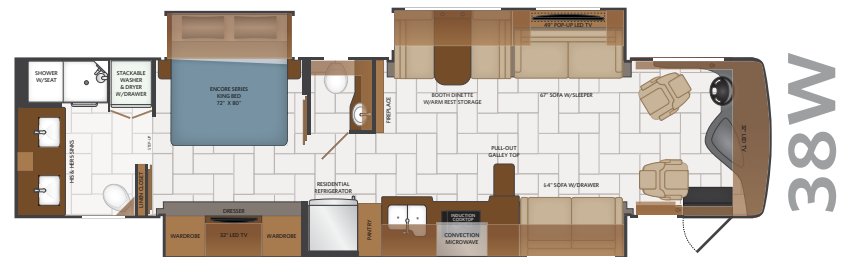
**38K** Options: 099, 107, 194, 217, 237, 436, 563, 833



**38N** Options: 099, 107, 194, 217, 237, 436, 563, 809, 833



**38W** Options: 099, 107, 194, 217, 237, 345, 436, 563, 833

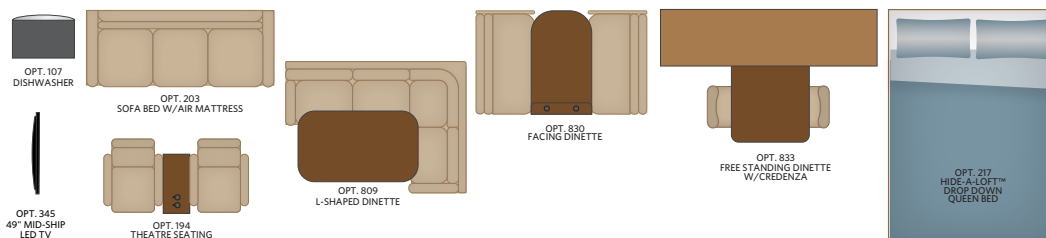


## TOP FEATURES

- 360HP Cummins® w/Allison 3000 Transmission
- Power Bridge chassis V-Ride rear suspension
- First diesel in it's class to offer Aqua-Hot® heating
- First diesel in it's class to offer front zone floor heat
- 12x24 hand-laid porcelain tile flooring
- Three impressive floorplans w/modern interiors
- 48" Exterior entertainment center
- Residential refrigerator w/2000W Pure Sine inverter
- Front generator slide
- 15,000 BTU roof A/C's
- Safe-T-View camera system
- Vaccubond wall, floor & ceiling construction
- F21 Construction Advantages
- Firefly house electronics command controls
- Magnadyne M-10 10" touch screen-stereo w/navigation
- Standard under chassis lighting
- LED Exterior lights

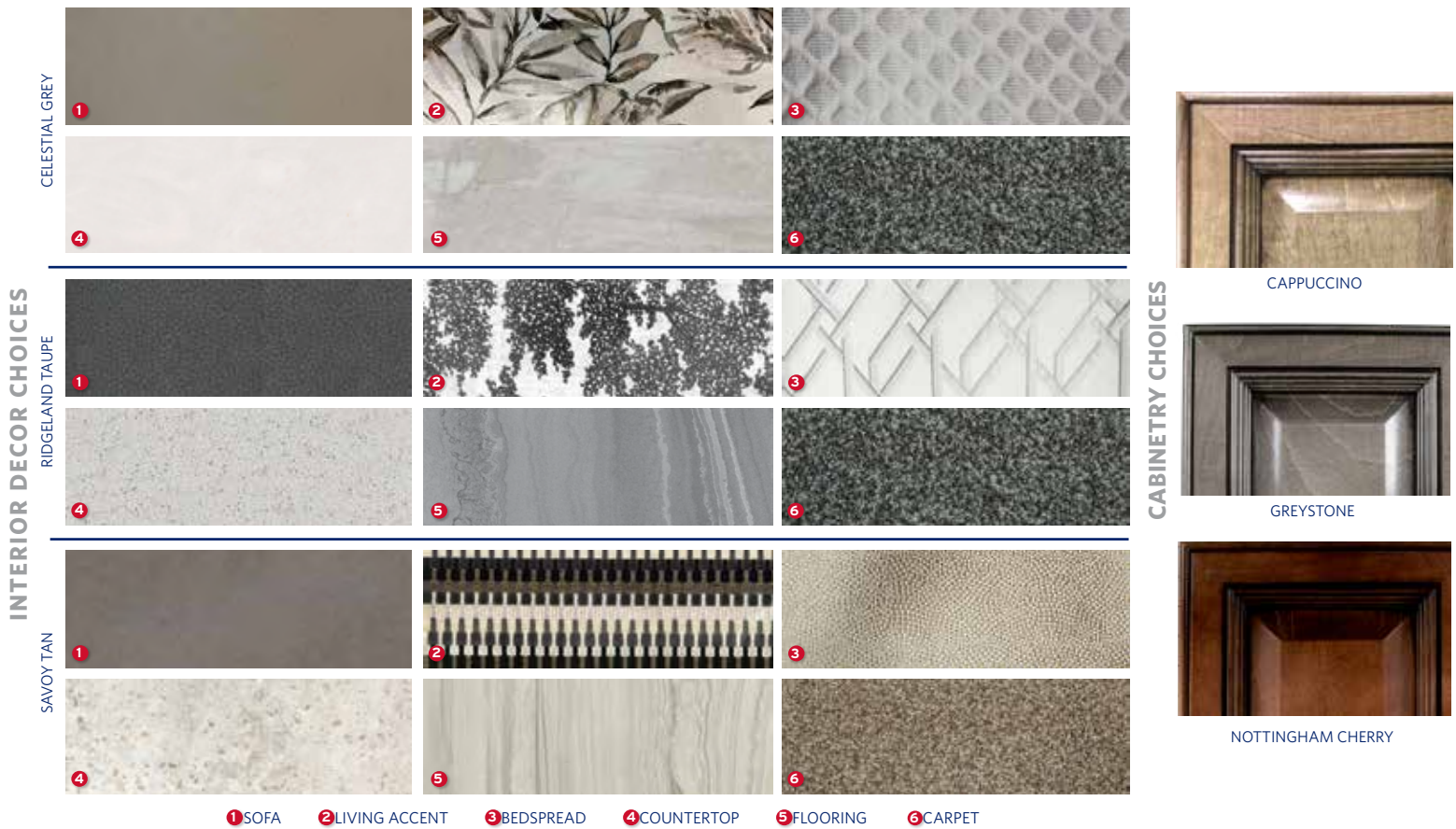
## OPTIONAL FEATURES

- Third roof 15,000 BTU roof A/C's
- Fischer Paykal drawer style dishwasher
- Technology Package  
Includes: Bluetooth® Speaker Porch Light, WiFi Extender, Cell Booster, 160 Watt Solar Panel, and Collision Avoidance Mobile Eye
- Hide-A-Loft™ drop down queen bed



## AVAILABLE OPTIONS

- 099 SATELLITE DELETE
- 107 DISHWASHER
- 194 THEATRE SEATING
- 203 SOFA BED W/AIR MATTRESS
- 217 HIDE-A-LOFT™ DROP DOWN QUEEN BED
- 237 THIRD ROOF A/C
- 345 MID-SHIP FLAT PANEL TV
- 436 CSA-FREIGHTLINER® PACKAGE
- 563 TECHNOLOGY PACKAGE
- 809 L-SHAPED DINETTE
- 830 FACING DINETTE
- 833 FREE-STANDING DINETTE W/CREDENZA



1 SOFA 2 LIVING ACCENT 3 BEDSPREAD 4 COUNTERTOP 5 FLOORING 6 CARPET

**CHASSIS**

MODEL	38F	38K	38N	38W
Wheelbase (inches)	263"	252"	252"	263"
Front GAWR (lbs)	12,400	12,400	12,400	12,400
Rear GAWR (lbs) - 360HP	21,000	21,000	21,000	21,000
GCWR (lbs) - 360HP	43,400	43,400	43,400	43,400
Hitch Rating Weight (lbs)	10,000	10,000	10,000	10,000
Tongue Weight (lbs)	1,000	1,000	1,000	1,000
Fuel Capacity (gal)	100	100	100	100

**DIMENSIONS AND CAPACITIES**

MODEL	38F	38K	38N	38W
Overall Length (inches)	40' 1"	38' 8"	38' 8"	40' 1"
Overall Height (with A/C)	12' 10"	12' 10"	12' 10"	12' 10"
Overall Width (maximum)	102"	102"	102"	102"
Interior Height (maximum)	84"	84"	84"	84"
Interior Width (maximum)	96"	96"	96"	96"
Patio Awning Width (feet & inches)	19' 6"	10' 8"	18'	18'
Interior Storage (cu. ft.)	173	151	151	160
Exterior Storage (cu. ft.)	156	156	156	156
Fresh Water Holding Tank (gal)	100	100	100	100
Grey Water Holding Tank (gal)	75	75	75	75
Black Water Holding Tank (gal)	50	50	50	50
Aqua-Hot 400	S	S	S	S

**POWER BRIDGE® CHASSIS**

Standard 360HP  
 Model: Freightliner® XCS Series  
 Engine: Cummins ISB 6.7L  
 Transmission: Allison® 3,000 MH 6-Speed w/Electronic Shifter  
 Alternator: Delcom Remy 160 Amp  
 Torque: 800 lb.-ft. @ 1,800 RPM  
 Horsepower: 360HP

**EXTERIOR CHOICES**

AQUARIUS  
 LUMINOUS



PINNACLE  
 RAINIER



Product information, photography and illustrations included in this publication were as accurate as possible at the time of printing. For further product information and changes, please visit our website at [www.fleetwoodrv.com](http://www.fleetwoodrv.com) or contact your local Fleetwood dealer. Prices, materials, design and specifications are subject to change without notice. All weights, fuel, liquid capacities and dimensions are approximate. Fleetwood RV has designed its recreational vehicles to provide a variety of uses for its customers. Each vehicle features optimal seating, sleeping, storage and fluid capacities. The user is responsible for selecting the proper combination of loads (i.e., occupants, equipment, fluids cargo, etc.) to ensure that the vehicle's capacities are not exceeded.

